

The Best Experience The Electric Experience

50x faster connection and 100% uptime

Self-Reliant Communication

- Supports all smart functionality
- No cellular or WiFi dependency to a central server
- No IT infrastructure cost or upgrades
- Zero downtime
- Portfolio dashboard management

Dynamic Power Optimization

- Accommodates 3X more chargers
- Avoid expensive electrical upgrades
- Industry-leading safety and performance

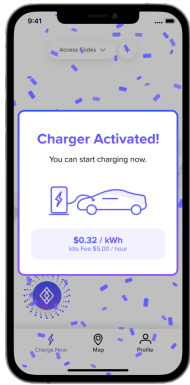


5-YEAR STD. WARRANTY

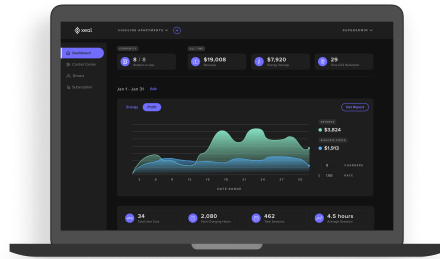


Smart Functionality

- Payments
- Revenue Share
- Station Availability
- Remote Access
- Diagnostics
- Maintenance
- Dashboard Reporting
- Parking Enforcement
- Demand Response
- Load Management



DRIVER APP



BUILDING OWNER PORTAL



WALL MOUNT



PEDESTAL

Key Features

Design	Sleek design and configurable for indoor and outdoor use
Charging Speed	Universal level 2 charger is compatible with all electric vehicles and charges up to 3X faster
Dashboard	Accurate energy metering, dynamic access control, over-the-air updates, and automated revenue share model
Future-Proof Connectivity	Apollo Protocol allows remote control with no IT capex and no internet dependence to a central server needed to operate
Easy Install	Building-integrated power management with no electrical upgrades
Driver Mobile App	Seamless 'Tap-to-Charge' experience with 50X faster connection and 100% uptime
Reporting	Data reporting, monitoring, customized control, and user management via building portal

Technical Specifications

Charging Power	32 Amp (7.7kW max)	Installation	Hardwired (3 foot service whip protected)
Product Dimensions	19.7"L x 8.9"W x 5.3"D	Vehicle Connector Type	Over-molded SAE J1772 Connector
Product Weight	13.5 lbs	Accessories Included	SAE J1772 Connector Holster (wall mount)
Supply Circuit	208/240V, 40A	Environment Rating	Indoor/Outdoor rated
Warranty	5 years	Operating Temperature	-22°F to 122°F (-30°C to +50°C)
Charge Cable Length	25 feet	Certifications	ETL, cETL, ENERGY STAR®
Enclosure	Fully Sealed NEMA 4	Country of Origin	United States of America
Connectivity	Apollo Protocol		